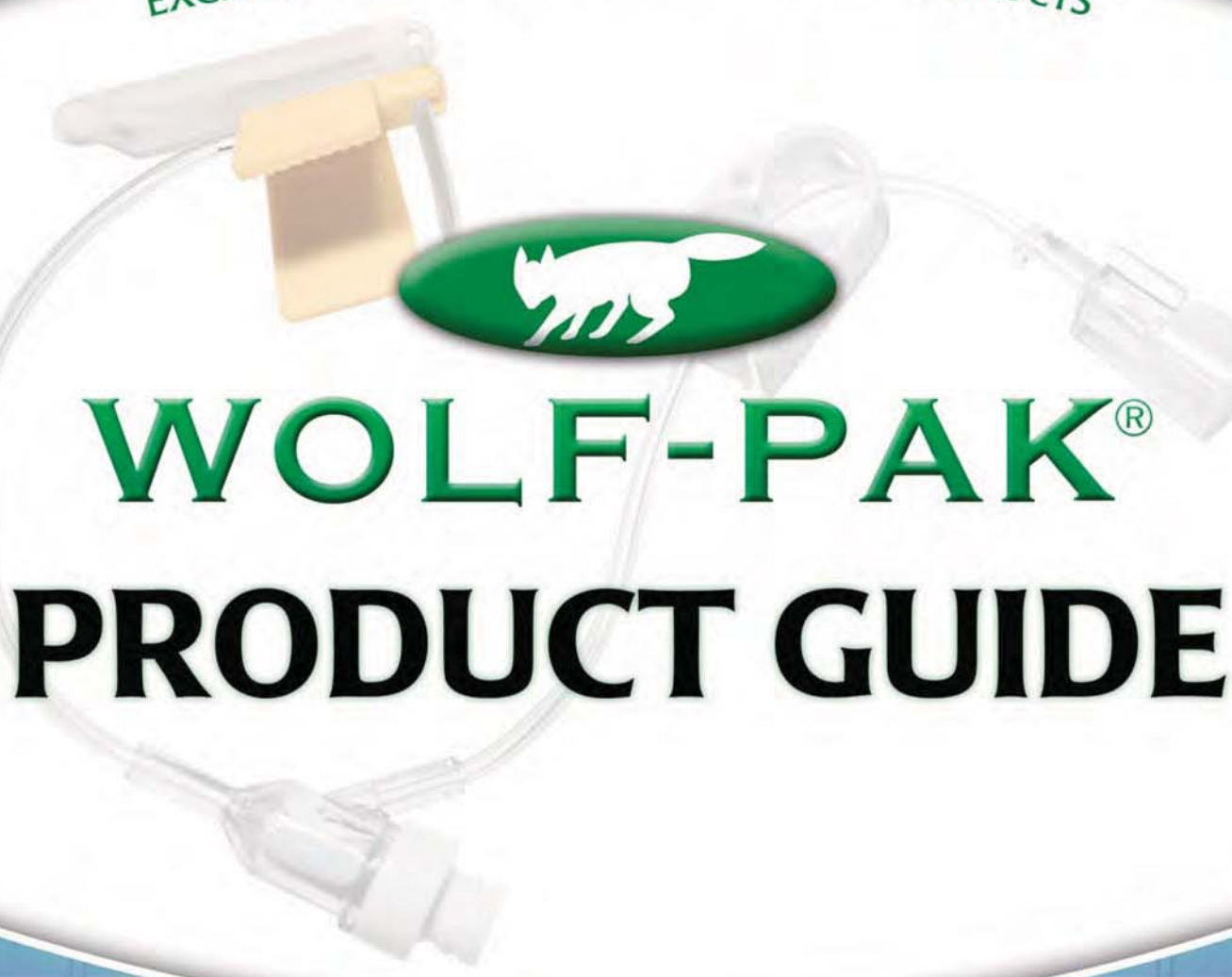




EXCLUSIVE WOLF-PAK® FAMILY OF PRODUCTS



WOLF-PAK® PRODUCT GUIDE

TO ORDER CALL:
800.335.9653

TO ORDER ONLINE 24/7:
www.wolfmed.net

WOLF-PAK®



Prefilled Syringes



NUMBER	DESCRIPTION	QUANTITY
PS0512	.9% Sodium Chloride, 5mL Flush	100/box
PS1012	.9% Sodium Chloride, 10mL Flush	100/box
PS100U	Heparin, 5mL Flush, 100 unit	100/box
PS10U	Heparin, 5mL Flush, 10 unit	100/box
PS3100U	Heparin, 3mL Flush, 100 unit	100/box
PS310U	Heparin, 3mL Flush, 10 unit	100/box

- Terminally sterilized
- Saves time & money versus manually filling syringes
- 2 year shelf life
- Latex-free & preservative-free
- Tamper evident packaging
- Helps pharmacies with USP <797> compliance

WOLF-PAK®



Latex Free Dressing Change Kits

NUMBER	DESCRIPTION	QUANTITY
DC3000LFS	Dressing Change Kit w/Tegaderm™	30/case
DC3055LF	Dressing Change Kit w/Chloraprep & Tegaderm CHG	30/case
DC3065LF	Dressing Change Kit w/Chloraprep Triple Swabsticks & Tegaderm	30/case
DC3070LFS	Dressing Change Kit w/Chloraprep® & Opsite®	30/case
DC3075LF	Dressing Change Kit w/Chloraprep® & Tegaderm™	30/case
DC3080LF	Dressing Change Kit w/Chloraprep® & Tegaderm™ Cloth Border	30/case
DC3085LF	Dressing Change Kit w/Chloraprep Triple Swabsticks & Tegaderm Cloth Border	30/case
DC4075LF	Dressing Change Kit w/Chloraprep, Biopatch & Tegaderm	30/case

DC3000LFS

- 1 ea Mask
- 1 pr Latex-Free Exam Gloves
- 1 ea Drape, 13" x 19"
- 1 ea Tape Measure, 24"
- 1 ea **Tegaderm™ Transparent Dressing**, 4" x 4¾"
- 1 ea Alcohol Swabsticks, 3's
- 1 ea PVP Swabsticks, 3's
- 1 ea Gauze Sponge, 4" x 4"
- 1 ea Gauze Sponge, 2" x 2"
- 1 ea Pre-Split Non-Woven Sponge
- 1 ea Non-Adherent Pad
- 1 ea Roll of Tape
- 1 ea Dressing Change Label
- 1 ea Tray



TO ORDER: **800.335.9653**



www.wolfmed.net



Latex Free Dressing Change Kits

Sterile Contents:



DC3075LF

- 1 ea Mask
- 1 pr Latex-Free Exam Gloves
- 1 ea Drape, 17" x 19"
- 1 ea Tape Measure, 24"
- 1 ea **3ml ChloroPrep® One-Step Applicator**
- 1 ea ChloroPrep® Insert
- 2 ea Alcohol Prep Pads
- 1 ea Gauze Sponge, 4" x 4"
- 1 ea Gauze Sponge, 2" x 2"
- 1 ea Pre-Split Non-Woven Sponge
- 1 ea Non-Adherent Pad
- 1 ea Roll of Tape
- 1 ea **Tegaderm™ Transparent Dressing**
- 1 ea Dressing Change Label
- 1 ea Tray

DC3055LF

- 1 ea Mask
- 1 pr Latex-Free Exam Gloves
- 1 ea Drape, 17" x 19"
- 1 ea Tape Measure, 24"
- 2 ea Alcohol Prep Pads
- 1 ea **3ml ChloroPrep® One-Step Applicator**
- 1 ea ChloroPrep® Insert
- 1 ea Gauze Sponge, 4" x 4"
- 1 ea Gauze Sponge, 2" x 2"
- 1 ea Pre-Split Non-Woven Sponge
- 1 ea Non-Adherent Pad
- 1 ea Roll of Tape
- 1 ea **Tegaderm™ Dressing w/CHG**
- 1 ea Dressing Change Label
- 1 ea Tray

DC3065LF

- 1 ea Mask
- 1 pr Latex-Free Exam Gloves
- 1 ea Drape, 17" x 19"
- 1 ea Tape Measure, 24"
- 2 ea Alcohol Prep Pads
- 1 ea **ChloroPrep® Triple Swabsticks**
- 1 ea ChloroPrep® Insert
- 1 ea Gauze Sponge, 4" x 4"
- 1 ea Gauze Sponge, 2" x 2"
- 1 ea Pre-Split Non-Woven Sponge
- 1 ea Non-Adherent Pad
- 1 ea Roll of Tape
- 1 ea **Tegaderm™ Transparent Dressing**
- 1 ea Dressing Change Label
- 1 ea Tray

DC3070LFS

- 1 ea Mask
- 1 pr Latex-Free Exam Gloves
- 1 ea Drape, 17" x 19"
- 1 ea Tape Measure, 24"
- 2 ea Alcohol Prep Pads
- 1 ea **3ml ChloroPrep® One-Step Applicator**
- 1 ea ChloroPrep® Insert
- 1 ea Gauze Sponge, 4" x 4"
- 1 ea Gauze Sponge, 2" x 2"
- 1 ea Pre-Split Non-Woven Sponge
- 1 ea Non-Adherent Pad
- 1 ea Roll of Tape
- 1 ea **Opsite IV 3000 Dressing**
- 1 ea Dressing Change Label
- 1 ea Tray

DC3080LF

- 1 ea Mask
- 1 pr Latex-Free Exam Gloves
- 1 ea Drape, 13" x 19"
- 1 ea Tape Measure, 24"
- 2 ea Alcohol Prep Pads
- 1 ea **3ml ChloroPrep® One-Step Applicator**
- 1 ea ChloroPrep® Insert
- 1 ea Gauze Sponge, 4" x 4"
- 1 ea Gauze Sponge, 2" x 2"
- 1 ea Pre-Split Non-Woven Sponge
- 1 ea Non-Adherent Pad
- 1 ea Roll of Tape
- 1 ea **Tegaderm™ Dressing Cloth Border**
- 1 ea Dressing Change Label
- 1 ea Tray

DC3085LF

- 1 ea Mask
- 1 pr Latex-Free Exam Gloves
- 1 ea Drape, 13" x 19"
- 1 ea Tape Measure, 24"
- 2 ea Alcohol Prep Pads
- 1 ea **ChloroPrep® Triple Swabsticks**
- 1 ea ChloroPrep® Insert
- 1 ea Gauze Sponge, 4" x 4"
- 1 ea Gauze Sponge, 2" x 2"
- 1 ea Pre-Split Non-Woven Sponge
- 1 ea Non-Adherent Pad
- 1 ea Roll of Tape
- 1 ea **Tegaderm™ Dressing Cloth Border**
- 1 ea Dressing Change Label
- 1 ea Tray

DC4075LF

- 1 ea Mask
- 1 pr Latex-Free Exam Gloves
- 1 ea Drape, 17" x 19"
- 1 ea Tape Measure, 24"
- 2 ea Alcohol Prep Pads
- 1 ea **3ml ChloroPrep® One-Step Applicator**
- 1 ea ChloroPrep® Insert
- 1 ea Gauze Sponge, 4" x 4"
- 1 ea Gauze Sponge, 2" x 2"
- 1 ea Pre-Split Non-Woven Sponge
- 1 ea Non-Adherent Pad
- 1 ea Roll of Tape
- 1 ea **Tegaderm™ Transparent Dressing**
- 1 ea **Biopatch® Dressing**
- 1 ea Biopatch® Insert
- 1 ea Dressing Change Label
- 1 ea Tray



WOLF-PAK®



Latex Free IV Start Kits

NUMBER	DESCRIPTION	QUANTITY
IV5000	Latex Free IV Start Kit w/Tegaderm	50/case
IV5060LF	Latex Free IV Start Kit w/Chloraprep® Applicator	50/case

IV5000 Sterile Contents:

- 1 pr Latex-Free Exam Gloves
- 1 ea Alcohol Prep Pad
- 1 ea Latex-Free Tourniquet
- 2 ea Gauze Sponge, 2" x 2"
- 1 ea Roll Transpore Tape
- 1 ea Tegaderm™ Transparent Dressing, 2 3/8" x 2 3/4"
- 1 ea PVP Pad
- 1 ea Dressing Change Label



IV5060LF Sterile Contents:

- 1 ea **Chloraprep Frepp® Applicator**
- 1 ea Chloraprep Frepp® Insert
- 1 pr Latex-Free Exam Gloves
- 1 ea Latex-Free Tourniquet
- 1 ea Gauze Sponge, 2" x 2"
- 1 ea Opsite® Dressing
- 1 ea Roll Transpore Tape
- 1 ea Dressing Change Label

TO ORDER: **800.335.9653**



www.wolfmed.net



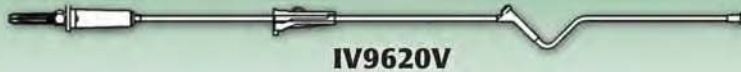
FS9600



IV9610



IV9611N



IV9620V

WOLF-PAK®

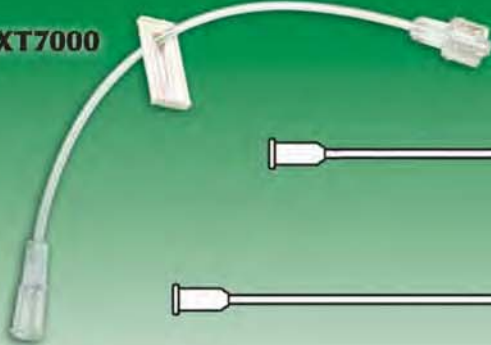


IV Administration Sets

NUMBER	DESCRIPTION	QUANTITY
IV7815	IV Set 78" 15 Drop Vented	50/case
IV8310	IV Set 83" 10 Drop Non-Vented	50/case
IV9610	IV Set 96" 10 Drop Non-Vented	50/case
IV9611N	IV Set 96" 10 Drop Non-Vented w/Wolf-Site® Needle Free Injection Site	50/case
IV9620V	IV Set 96" 20 Drop Vented	50/case
FS9600	IV Set 96" 20 Drop Vented .2 Micron Filter <i>(Taxol Compatible)</i>	50/case
FS9600N	IV Set 96" 20 Drop Vented .2 Micron Filter w/Wolf-Site® Needle Free Injection Site <i>(Taxol Compatible)</i>	50/case

All Wolf-Pak® Administration sets are Latex-free, lipid resistant, and feature non-DEHP tubing. Each set features a rotating male luer lock that helps to prevent inadvertent twisting or disconnection of the catheter.

EXT7000



EXT1200



EXT1600



WOLF-PAK®



IV Extension Sets

NUMBER	DESCRIPTION	QUANTITY
EXT7000	Extension Set 7" M/F .3ML	50/box
EXT1200	Extension Set 12" M/F .4ML	50/box
EXT1600	Extension Set 16" M/F .5ML	50/box

All Wolf-Pak® Extension sets are Latex-free, non-DEHP, and lipid resistant.

TO ORDER: 800.335.9653



www.wolfmed.net



RF2500

RF5500

RF6500

WOLF-PAK®



IV Flow Regulators

NUMBER	DESCRIPTION	QUANTITY
RF2500	Extension Set 18" w/IV Rate Flow Regulator	50/case
RF5000	IV Set 92" 20 drop w/IV Rate Flow Regulator	50/case
RF5500	IV Set 92" 20 drop w/IV Rate Flow Regulator, Straight Tubing	50/case
RF6000N	IV Set 92" 20 drop w/Wolf-Site® Needle Free Injection site and IV Rate Flow Regulator	50/case
RF6500	IV Set 92" 20 drop w/IV Rate Flow Regulator, .22 Micron Filter, Straight Tubing	50/case

Wolf-Pak® Flow Regulator Sets are Latex-free and feature non-DEHP tubing.

- A money-saving alternative to costly IV pump infusions
- Ideally suited for gravity infusions
- Rates can be set from 0-250mL/hour



SYR60L

SYR60C

SYR20L

SYR12L

WOLF-PAK®



Syringes

NUMBER	DESCRIPTION	QUANTITY
SYR03L	3cc Luer Lock Syringe	100/box
SYR06L	6cc Luer Lock Syringe	100/box
SYR12L	12cc Luer Lock Syringe	100/box
SYR20L	20cc Luer Lock Syringe	30/box
SYR35L	35cc Luer Lock Syringe	30/box
SYR60L	60cc Luer Lock Syringe	30/box
SYR60C	60cc Catheter Tip Syringe	30/box

Wolf-Pak® Syringes are made from the highest quality materials. All syringes are latex-free.

- Minimal dead space allows for medications to be effectively evacuated from the syringe barrel.
- Breakable syringe plunger prevents reuse.
- Blister packaging is tamper evident for product safety.

TO ORDER: **800.335.9653**



www.wolfmed.net



Safety Huber Needle Winged Infusion Set



- **SIMPLE**
- **SAFE**
- **SECURE**

BENEFITS

- Minimizes risk of needlestick injury
- Low profile allows for maximum patient comfort
- Color coded wing for ease of needle gauge identification

NUMBER	DESCRIPTION	QUANTITY
HP1950	19G X ½"	25/bx
HP1950Y	19G X ½" w/Y-site	25/bx
HP1975	19G x ¾"	25/bx
HP1975Y	19G x ¾" w/Y-site	25/bx
HP1910	19G x 1"	25/bx
HP1910Y	19G x 1" w/Y-site	25/bx
HP2050	20G X ½"	25/bx
HP2050Y	20G X ½" w/Y-site	25/bx
HP2075	20G x ¾"	25/bx
HP2075Y	20G x ¾" w/Y-site	25/bx
HP2010	20G x 1"	25/bx
HP2010Y	20G x 1" w/Y-site	25/bx
HP2275	22G x ¾"	25/bx
HP2275Y	22G x ¾" w/Y-site	25/bx
HP2210	22G x 1"	25/bx
HP2210Y	22G x 1" w/Y-site	25/bx

FEATURES

- Easy to use
- Latex-free
- Non-DEHP
- Audible and visible confirmation of safety feature
- Available with or without the needle-free access Y-site

WOLF-PAK®



Alcohol Preps

NUMBER	DESCRIPTION	QUANTITY
AP2000B	Alcohol Prep Pad Medium	200/box

- Antiseptic for skin preparation prior to injection or venipuncture
- Saturated with 70% V/V Isopropyl Alcohol



TO ORDER: **800.335.9653**



www.wolfmed.net

WOLF-PAK®



Needleless Connectors



NUMBER	DESCRIPTION	QUANTITY
WS2000B	Wolf-Site™ Needle Free Valve	100/Box
WS2002	Wolf-Site™ Needle Free Valve w/8" Extension Set	100/Box
WS2004	Wolf-Site™ Needle Free Valve w/14" Extension Set	100/Box

The Wolf-Site® Needle Free Valve is a one-piece, luer-activated valve designed for ease of use. It has a low profile design and is easy to swab. It is available as a stand-alone piece or with a preattached extension set.



WOLF-PAK®



Pump Pouches

NUMBER	DESCRIPTION	QUANTITY
PP0100	50-100 ml Pump Pouch	12/Case
PP0250D	250-500 ml Pump Pouch	12/Case
PP1000	1 Liter Pump Pouch	6/Case
PP3000	3 Liter Back Pack	6/Case

Wolf-Pak® Pump Pouches are single-use, disposable infusion bags designed with your patients in mind. Our durable pouches are economical and stylish for patients receiving outpatient TPN, PCA, antibiotic, chemotherapy and other infusion therapies. The pouches are compatible with most ambulatory infusion pumps, including: CADD Legacy, CADD PCA, CADD Prizm, Gemstar, BodyGuard, and Curlin Pumps.

TO ORDER: 800.335.9653



www.wolfmed.net

WOLF-PAK®



TPN Bags



NUMBER	DESCRIPTION	QUANTITY
TPNCP1L	1000 ml TPN Bag Compounder	50/Case
TPNCP2L	2000 ml TPN Bag Compounder	50/Case
TPNCP3L	3000 ml TPN Bag Compounder	50/Case
TPNGR1L	1000 ml TPN Bag Gravity 3 Leg	50/Case
TPNGR2L	2000 ml TPN Bag Gravity 3 Leg	50/Case
TPNGR3L	3000 ml TPN Bag Gravity 3 Leg	50/Case

Wolf-Pak® TPN Bags are made from 100% EVA material. Each bag offers a sterile fluid pathway for easy filling. Available for both Compounding and Gravity filling. Compounder Bags are compatible with the Hospira Nutrimix, Baxter Automix, Healthtech Ad Comp, and Secure Medical Auto Comp Compounding Systems.



WOLF-PAK®



CLEANROOM SUPPLIES

NUMBER	DESCRIPTION	QUANTITY
CRW99	Cleanroom Wipes, 9" x 9", Lint Free	300/Bag
TM120B	Tacky Mat, 18" x 36", Blue	120/Case

Cleanroom Wipes

- Suitable for Class 10,000 use.
- Compatible with most solvents.
- Lint free – for cleanroom hood.
- Manufactured and packaged in a cleanroom environment.

Tacky Mat

- Removes foot-borne particles before entering cleanroom.
- Color: blue.

TO ORDER: 800.335.9653



www.wolfmed.net



WOLF MEDICAL SUPPLY, INC.

Use Our Online Ordering System 24/7!

www.wolfmed.net

- Set up account in minutes
- Convenient 24/7 access
- View order history
- View product details and information
- Place orders easily from your stored favorites
- Secure online invoice payments



OUR PARTNERS INCLUDE...

**3M • Baxter • Becton Dickinson • Curlin • Energizer • Hospira Worldwide • I-Flow
Medical Action Industries • MiniMed • Moog • Sharps Compliance (SCI)
Smiths Medical (Deltec) • Terumo Medical •  Wolf-Pak® • Zefon • Zevex**